



[about](#)

[programs](#)

[publications](#)

[news](#)

[invertebrates](#)

[our work](#)

[support](#)

Pollinator Conservation

Pollinators are essential to our environment. The ecological service they provide is necessary for the reproduction of nearly 70 percent of the world's flowering plants, including more than two-thirds of the world's crop species. The United States alone grows more than one hundred crops that either need or benefit from pollinators, and the economic value of these native pollinators is estimated at \$3 billion per year in the U.S. Beyond agriculture, pollinators are keystone species in most terrestrial ecosystems. Fruits and seeds derived from insect pollination are a major part of the diet of approximately 25 percent of all birds, and of mammals ranging from red-backed voles to grizzly bears. In many places, the essential service of pollination is at risk from habitat loss, pesticide use, and introduced diseases.

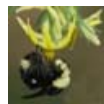
Program Features



Pollinator Conservation Resource Center

A wealth of information is currently available on the plants and guidance needed to implement pollinator conservation projects. This comprehensive resource center will help you find information that is appropriate for your area.

[Read more](#)



Agriculture

Native bees are valuable crop pollinators. These wild bees help increase crop yields, and may serve as important insurance when honey bees are hard to come by.

[Read more](#)



Organic Farming Resources

Learn how to manage the use of organic-approved pesticides and farming practices to provide the greatest protection to wild bees.

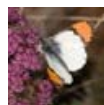
[Read more](#)



Managing Habitat for Native Pollinators

Learn how to manage natural areas and other landscapes in a way that benefits native bees, butterflies and other pollinators.

[Read more](#)



Gardens

Around your home, growing patches of native flowers that provide abundant nectar and pollen can improve the environment for pollinators.

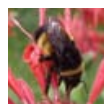
[Read more](#)



Parks and Golf Courses

Parks, golf courses and other greenspaces are increasingly important to the vitality of our communities. At the core of a healthy environment are pollinators.

[Read more](#)



Bumble Bees in Decline

Many formerly common North American bumble bees are now in decline. We are reaching out to scientists and citizen monitors across the country to document their status.

[Read more](#)

Red List of Bees

An online list of species profiles for approximately 100 bees, butterflies and moths that are at-risk

[Click here to donate](#)

Program Features

- [main page](#)
- [pollinator resource center](#)
- [agriculture](#)
- [organic farming resources](#)
- [managing habitat for pollinators gardens](#)
- [parks & golf courses](#)
- [bumble bees in decline](#)
- [red list of bees](#)
- [resources for teachers](#)
- [xerces pollinator publications](#)

Program Highlights

- The Xerces Society works with congressional staff to include [pollinators in the Farm Bill](#)
- Xerces organizes a [briefing to D.C. legislators](#) on honeybees, Colony Collapse Disorder and native pollinators
- National Research Council issues a [report on the Status of Pollinators](#) in North America

Additional Information

- [native bee biology](#)
- [other pollinator publications](#)
- [links](#)
- [contact](#)

photo: long horned bee (*Melissodes* sp.) on sunflower by Mace Vaughan



of extinction.
[Read more](#)



Native Bee Biology

Information on the biology and natural history of native bees, including solitary bees, bumble bees and cuckoo bees.
[Read more](#)



Resources for Teachers

This page details curricula, websites and other pollinator resources available to teachers and other educators.
[Read more](#)

The Xerces Society • 4828 SE Hawthorne Blvd. Portland, Oregon 97215 USA • tel 503.232.6639 • fax 503.233.6794 • info@xerces.org
[site map](#) • [contact](#) • [give](#) • [contact the webmaster](#)